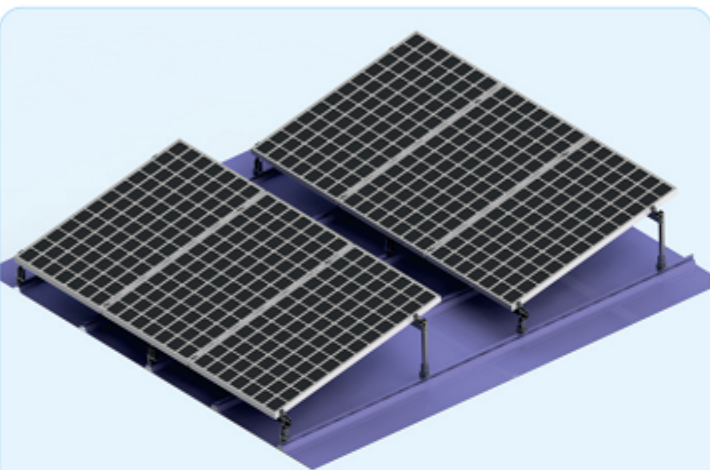




彩钢瓦屋顶支架 (夹具角度型)

产品说明/DESCRIPTION:

- 安装位置/Installation place: 彩钢瓦屋面/Caigang watts roof
- 斜面支架组件/Module slop: 根据实际需求/According to the practical demand
- 拉拔力/Drawing force: 1000N
- 风力承载能力/Wind load: 40m/s、32.5kg/m²、13级
- 雪载承受力/Snow load: 70kg/m²
- 支架类型/Module type 框架/Frame
- 材料/Material: 铝型材/Aluminium profile
- 颜色/Colour: 本色/Natural
- 使用年限/Warranty time: 25 years.



本系统由以下零部件组成/This system consists of the following components:

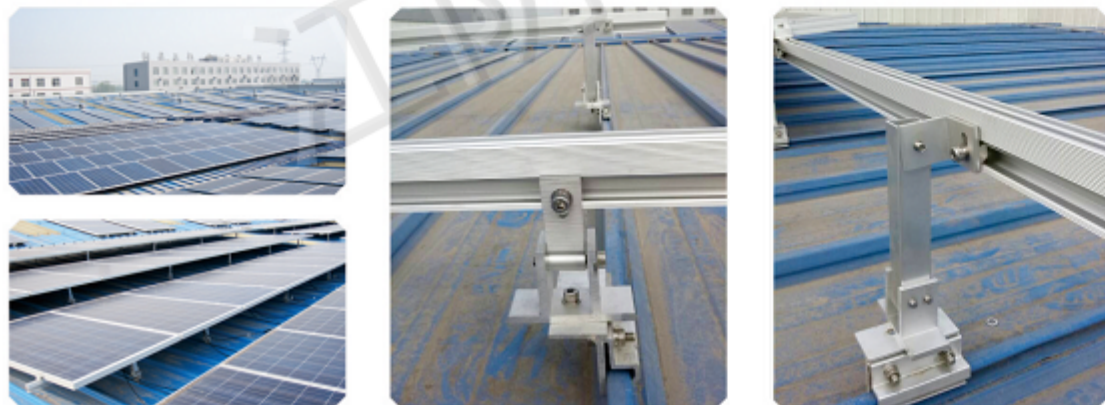


导轨 lead rail
夹具, 内六角螺栓, 平垫圈, 螺母 Fixture, inner six angle bolt, flat elastic pad/nut
U型底座, 内六角螺栓, 斜垫片, 平垫圈, 斜垫片 U type base, inner six angle bolt, both-side component, Even play mat, slider
边压块, 内六角螺栓, 斜垫片, 平垫圈, 斜垫片 Edge pressing block, six hexagon bolt/spring washer, nut slide
中压块, 内六角螺栓, 斜垫片, 平垫圈, 斜垫片 Medium pressure block, six hexagon bolt/spring washer, nut slide

优势/ADVANTAGES:

1. 美观/Good Appearance.
2. 简便易安装/Easy and flexible Installation.
3. 多样化设计/Diversified Application.
4. 重量轻/Light dead-weight.

工程实例照片



1 第一步/First step

The fixture with M8*30 inner six angle bolt is fixed on the Caigang watts, as shown below:
将夹具用M8*30的内六角螺栓固定在彩钢瓦上, 如下图:

Figure 1(a)

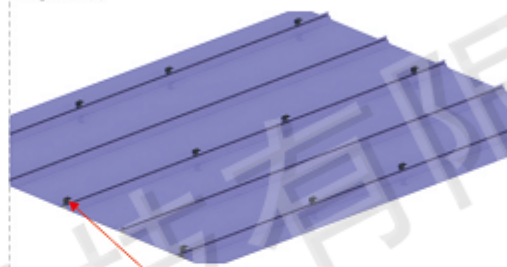
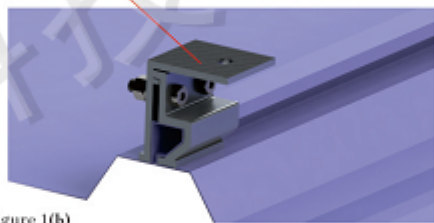


Figure 1(b)



2 第二步/Second step

Then use the M8*30 inner six angle bolt pre packed around the feet are fixed on the fixture; the following chart:
然后用M8*30的内六角螺栓将预装好的前后脚固定在夹具上; 如下图:



Figure 2(a)

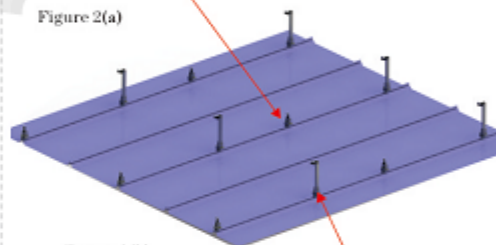


Figure 2(b)

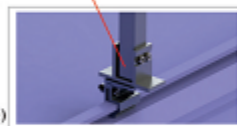


Figure 2(c)

3 第三步/Third step

then the guide rail slider fixed nut and M8*25 pre packaged within the six angle bolts, as shown below:
然后将导轨用预装好的滑块螺母及M8*25的内六角螺栓固定, 如下图:

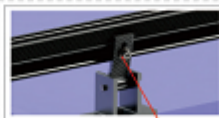


Figure 3(a)

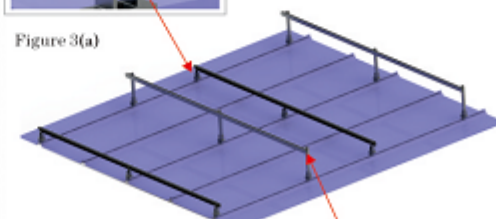


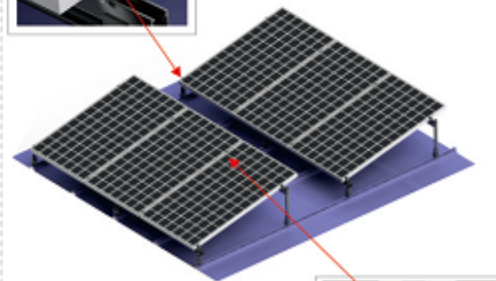
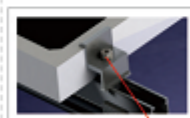
Figure 3(b)

Figure 3(c)



4 第四步/Fourth step

The installation component, using the pressure piece, inner six angle bolt and nut component slide block is fixed on the guide rail. The following diagram:
安装组件, 用压块、内六角螺栓及滑块螺母将组件固定在导轨上, 如下图:



The installation is finished.
安装结束完成。

